



The Gilboa United Methodist congregation gathers on the rail-trail in front of the historic church.

## INSIDE THIS ISSUE:

- 2** | **Upfitting the Thermal Belt Rail-Trail**
- 3** | **Spike Award Winner**  
The NCRT Board of Directors Welcomes a New Member  
2012 Honor Roll of Donors  
Executive Director’s Message
- 4** | **Update: Rail-Trail Projects**  
Tony Reevy’s New Book

## Join N.C. Rail-Trails!

Go to [WWW.NCRAILTRAILS.ORG](http://WWW.NCRAILTRAILS.ORG) and click on the ‘become a member’ link.

NCRT is a 501(c)(3) public non-profit. Membership dues & contributions are tax deductible.

## Upfitting the Thermal Belt Rail-Trail

*Story and photos by Nancy Pierce*

The second longest rail-trail in North Carolina bypasses rolling Carolina foothills and connects historic towns, but it’s known by few and used by even fewer outside Rutherford County. The 8-mile-long Thermal Belt Rail-Trail has no navigational signage, and it’s so rough in sections that it discourages the users one would expect in an area starved for long multi-use trails.

But that’s about to change. Rutherford Outdoor Coalition President Jerry Stensland has been juggling all the entities involved, and he says the trail should finally see significant improvements during 2013.

This railroad corridor was chartered before the Civil War as the Wilmington, Charlotte and Rutherford (completed to Rutherfordton in 1887) and the Charleston, Cincinnati &

Chicago (Rutherfordton to Marion in 1892), and then consolidated into Southern Railway in 1898. It was the transportation backbone of the area for decades, providing twice-daily passenger services and freight for the textile and wood product manufacturing.

Following the exit of many manufacturing operations in the 1980s, Southern Railway abandoned the Thermal Belt corridor in 1988. It was operated briefly by a local short line, then a Rutherfordton-based community development nonprofit, Bechtler Development Corporation, obtained federal rail banking status for the corridor and has managed it as a rail-trail for the past decade.

Under federal rail banking, the corridor has “interim” trail use, meaning that it could be resurrected for freight again if new manufac-

*continued on page 2...*





People using the trail near Gilkey

### Upfitting the Thermal Belt Rail-Trail continued from page 1...

turing operations needed it. So, the rails were left in place and covered with rough gravel.

But it's been frustrating for trail lovers. Runner Willie Lowe lives in rural Rutherford County and uses trails in Spartanburg, Greenville, Asheville and Marion. A few years ago he organized the local running club to meet at the Thermal-Belt's southernmost point in Spindale for out-and-back long weekly runs. "But everyone lost interest pretty fast," he says. "It's so scenic, but with the exposed rails and gravel, it just wasn't very user-friendly."

So Stensland, who was Rutherford County's Cultural and Heritage Planner until the job was eliminated in December of 2012, has led an effort to upfit the trail. NC Rail-Trails helped out with pro bono legal services.

By early summer 2013, rails and ties will be pulled up and sold, with proceeds going to prepare the trail for resurfacing. This does not preclude ever using the corridor for freight again, since updated rails and ties would have to be installed for freight use anyway. So, it makes sense to pull up the old ones and improve the surface for trail users.

A grant from the NC Recreational Trails Program will pay for paving a 2-mile urban section down the middle of Spindale's Main Street, where park-like green space and rows of trees buffer the trail from the split road. North of Spindale to Ruth, fine gravel will replace the rocky surface. North of Ruth to

the trail's terminus at Gilkey, the trail is already quite smooth. Signage and historical markers will follow.

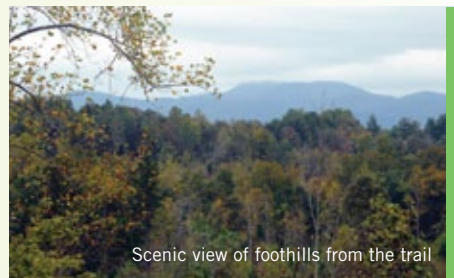
Historical and cultural aspects of the area are varied. Spindale, home of the American Dairy Goat association, hosts a dairy goat festival and parade each spring. Grazing goats can be seen from parts of the trail.

Rutherfordton is home to 82-year-old clothing manufacturer Tanner Companies, maker of the Doncaster line of fine women's clothing. The Tanner Outlet store and its restaurant, The Lavender, are at the trail's midpoint near Rutherfordton. "Trail users should feel very welcome using our parking lot," says Chairman of the Board Mike Tanner, who is also a member of the Rutherford Outdoor Coalition. "Then they can stop by and shop." The restaurant is a bit upscale but not so much so that they'll mind athletic clothes. Mike notes that his employees use the trail regularly for noon exercise walks.

The Overmountain Victory National Historic Trail, which traces the route Patriot troops from East Tennessee took across the mountains to the decisive Revolutionary War Battle of Kings Mountain, crosses the Thermal Belt Rail-Trail near the Tanner Outlet.

Downtown Spindale's Barley's Taproom & Pizzeria co-owner Linette Gosnell says, "Lots of outdoor-type people come in here. We have craft beers, vegetarian options and carbs, healthy and hearty food. It's a great place to finish or end a run or bike. We do see people coming off the trail on nice days, but there could be so many more!"

Another trail landmark is Gilboa United



Scenic view of foothills from the trail

Methodist Church and its historic cemetery, both so close to the rail-trail that parishioners walk across the trail to get from the parking lot to the church. The congregation itself is 200 years old, but the current building rose in 1887 just as the railroads arrived. Lifetime church members 87-year old Donald Spratt and his sister, 85-year old Charlotte Spratt McMahon grew up on the family farm behind the church. As children, they walked to the

passenger rail station for trips to town or to visit relatives in Marion.

Ms McMahon recalls being scolded for giggling when the train whistle drowned out the sermon or, even worse, for putting her pennies on the rails to get flattened rather than in the collection box.

Prior to the California Gold Rush, from 1820 through the 1840s millions of dollars in gold were panned or dug from the creeks and valleys of western North Carolina. In 1830 the Bechtler family, German metalworkers, opened a jewelry store in Rutherfordton and within a year they were minting coins from local gold. During the Civil War "Bechtler Gold" was well-accepted for commerce when Union or Confederate currency lost value. One mile south of the Gilboa church beside the trail, a small county park and historical site is being developed around a subsurface mine operated by the Bechtlers during that time.

The architecture enthusiast will love Rutherfordton's historic and lively downtown, just one mile from the rail-trail. Rutherfordton has the best cluster of intact antebellum architecture in the southern foothills, including the original Bechtler family home place and many public structures. This town of only 4200 residents has numerous examples of Gothic-Revival and Classic-Revival architecture and a 20-acre historic cemetery, all within an easy walk or bike ride from the trail.

If Rutherford County leaders want to encourage healthy recreation for its residents and draw tourism dollars, they can stay atop potential for expansion south and north. It's still technically active to the south, but if service ceases it could connect to the existing Forrest Hunt Greenway rail-trail in Forest City, creating a nearly 13-mile one-way trip. In fact, the Thermal Belt has potential to become the longest rail trail in the state through 30 miles of rolling foothills, connecting Forest City to Marion. At that length, rail-trails elsewhere in the United States attract tourists for multi-days visits, boosting economic gains for all the towns in their path.

And finally, the answer to the question you have been asking yourself: "Just what is a thermal belt anyway?" It's an area with a unique combination of altitude and proximity to flatlands and to mountains, resulting in a temperate climate generally favorable for growing fruit. Cooler in the summer and warmer in the winter, it's also ideal for year-round outdoor recreation. Go Thermal Belt!

## Michael Domonkos awarded the CR Townsend Volunteer Spike Award

Former NCRT board member Michael Domonkos was honored with the 2012 CR Townsend Volunteer Spike Award. Mike served on the board of directors from 1997 to 2012, where he used his legal expertise to bring federal railbanking projects to fruition in North Carolina. In 2006, Domonkos successfully

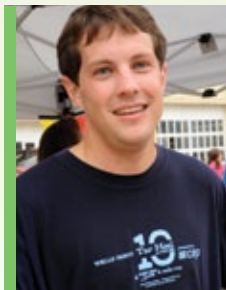


argued a case for the Thermal Belt Rail-Trails that helped ensure the success of rail-banking throughout the state of North Carolina.

More info on the case is here:

[www.ncrailtrails.org/littletoot/FALL06.PDF](http://www.ncrailtrails.org/littletoot/FALL06.PDF)

## ADAM OLLS INTRODUCTION



We are happy to announce that Adam Olls has joined our board of directors. Adam is an attorney at Baily and Dixon and has helped NCRT with

several rail-trail projects including legal council for the Thermal Belt Rail-Trail. Adam is pictured at the finish line after running our 2nd annual Ales for Rail-Trails 5K in Durham. The 5K was a great success and we look forward to having it again next fall. Welcome aboard Adam!

## Executive Director's Message

*Many exciting changes are taking place here at North Carolina Rail-Trails in 2013. I am happy to announce that we have made the leap from a staff of one to a staff of two! Alison Valentine*



*Smith has joined the team as a part-time project assistant. Alison brings a love of the environment and recreation to NCRT and is helping with a wide range of duties from administration and fundraising to grant management and community outreach. I am so pleased to have her on the team. We'll soon be welcoming another (very small) new member of NCRT as I am preparing to go out on maternity leave. Alison will hold down the fort while I am away. Many trails seem to be on the verge of major construction development. The E & A Rail-Trail in Surry County is poised to place two new bridges while the Dunn-Erwin Rail-Trail will hopefully connect to the Cape Fear River Park Trail. Perhaps the most exciting development is the completion of the American Tobacco Trail with the installation of a long-awaited bridge over I-40 in Durham. NC Rail-Trails founder AL Capehart was instrumental in the development of the American Tobacco Trail and we are so proud to see this trail reach its full potential. Congratulations AL.*

*Carrie Banks*

## Board of Directors

John Morck, Chairman | *Apex*  
 Dave Connelly, Vice Chair | *Durham*  
 Robert (Bob) Segal, Treasurer | *High Point*  
 Nancy Pierce, Secretary | *Charlotte*  
 Carrie E. Banks, President\* | *Carrboro*  
 Adam Olls | *Raleigh*  
 Harry Clapp | *Greensboro*  
 Clare Reece-Glore | *Durham*  
 Charles H. Farley | *Greenville*  
 Ed Lewis | *Aberdeen*  
 Tony Reevy | *Durham*  
 Michael Goodman | *Durham*

\* (919) 428.7119; [execdirector@ncrailtrails.org](mailto:execdirector@ncrailtrails.org)

# 2012 Honor Roll of Donors

*North Carolina Rail-Trails would not exist without you...our supporters. As a special way of saying thank you we are including your name in our yearly honor roll. Thank you so much for your gift. Because of you...the rail-trail movement is gaining traction in North Carolina.*

### Conductor (\$1000 and up)

David Connelly

### Leadership Circle (\$500-\$1000)

Bruce Berberick  
 Nancy Pierce  
 Bob and Alethea Segal

### Benefactor (\$300-\$500)

Dilys Bowman  
 AL Capehart and CR Townsend

### Supporter (\$100-\$300)

John and Jane Banks  
 Frank and Marcia Bennett  
 Joseph Best  
 Bud and Sandra Boren  
 Anonymous  
 Bill Causey  
 Charles Classen  
 Marilyn Clayton  
 David Craft  
 Robert and Susan Crenshaw  
 Curtiss Devereux  
 Michael Domonkos  
 Anonymous  
 Ivan and Lisa Forehand  
 James Green  
 Antonia Hartley  
 Gael Hawkins  
 Garland Horton  
 Clare Reece-Glore and John Strickler  
 Alan Johnson  
 Tom Johnson

Linda Leighty  
 Edward Lewis  
 Charles and Becky McClure  
 Robert and Rita Menzies  
 John Morck  
 Mary Louise Powell  
 James Riley, Jr.  
 George Smart, Jr.  
 Geoff Steele  
 Andrew Stershic  
 Michael and Suzanne Stoskopf  
 Walter Turner  
 Bob and Karen Vollinger

### Friend (\$25-\$100)

Dan and Susan Barco  
 Terrance Benje  
 Art and Mary Bethel  
 Bradna Bowers  
 John and Asa Butts  
 Herbert Carlton  
 Carolina Thread Trail / Catawba Lands Conservancy  
 Harry Clapp  
 Wayne Clark  
 David Coats  
 Joyce Collins  
 Elizabeth Conner  
 David Copley  
 Gail Austin Curry  
 Ruth Heaton and H. Coleman Day  
 Jack and Lorry Dennison  
 Jody Dietrich  
 William Flournoy  
 Archie Futrell  
 Linda Gritz  
 Anonymous

L.C. Green  
 Sidney Harrell  
 Alycia Hassett  
 Roger Holland  
 Joe Huegy  
 Paul and Cathy Jarmul  
 Thomas and Marian Jerdee  
 Leslie Kennedy  
 Charles Kernan  
 Mary Kiesau  
 Ruth Leggett  
 Richard and Pennie Martin  
 Carrie Banks and Matt Simon  
 Bill McCarter  
 Dale and Jule McKeel  
 Mike and Claudia Nix  
 Merlin Perry  
 Peter Prunkl  
 Scott Shore and Rebecca Boston  
 Michael and Janet Resnick  
 Jim and Jane Richardson  
 Eric Schumann  
 Tom and Elizabeth Shay  
 Margaux Simon  
 Anonymous  
 Sue Stanley  
 Robert and Susan Stevens  
 Jim Thompson  
 Anonymous  
 Mark and Judy Wright  
 Susan Wyatt

### Members (25)

Dean Brodhag  
 Yvonne Cole

John Culligan  
 Amy Miller and David Kiel  
 J. Michael Davis  
 James DeGrave  
 Kate Dixon  
 Charles Farley  
 Jim and Edith Johnson  
 Woody and Jo Jo Keen  
 Robert and Jolyn Kelley  
 Lynn Wilson and Paul Kilough  
 Peggy and Chuck Korte  
 Jennifer Krantz  
 Richard Kunst  
 Hardy Leaman  
 Bob Levin  
 Drew and Allison Margerison  
 Michael McFadden  
 Jean Middleton  
 R.L. Morris  
 North Carolina Horse Council  
 North Carolina Railroad  
 W. Gaston Perry  
 Russell Pierce  
 Tony Reevy  
 Sheila Rittgers  
 Kathy Roggenkamp  
 Anonymous  
 Martha Scofford  
 Kristen Smith  
 John Stein  
 Jerry Stensland  
 Edward and Janice Swab  
 Peter Tittle  
 Thomas and June Turner  
 Ron White



member:



charter member:



## RE-LIVE SOME RAIL HISTORY WITH TONY REEVY'S NEW BOOK *O. Winston Link: Life Along the Line*

O. Winston Link photographed the Norfolk and Western, the last major steam railroad in the United States, when it was converting its operations from steam to diesel in the 1950s. Link's N&W project captured the industry at a moment of transition, before the triumph of the automobile and the airplane that ended an era of passenger rail service. His work

also revealed a small-town way of life that was about to experience seismic shifts and, in many cases, vanish completely. Including a collection of more than 180 of Link's most famous works and rare images that have never before been published, *O. Winston Link: Life Along the Line* offers a moving account of the people and communities surrounding the last steam railroad.



## UPDATE: Rail-Trail Projects

**Elkin & Allegheny Rail-Trail:** The Elkin Valley Trails Association continues to make great strides! The rail-trail has been designated as the primary route for the Mountains-to-Sea Trail and the Association has completed extensive research on the Elkin & Allegheny Railroad's history and will be publishing a book in the future.

**West Pender Rail-Trail:** NCRT is awaiting a decision from the Pender County Board of Commissioners. Grant money is currently available to begin construction on the first mile of this rail-trail, but the project is stalled because of concerns that the trail will negatively impact a county-owned business development park. NCRT presented to the Board of Commissioners in November 2012, expounding the positive economic development benefits of trails. We'll keep you updated.

**Dunn-Erwin Rail-Trail:** Our fingers are crossed for two grant proposals that NCRT has submitted with the Town of Erwin to connect the Dunn-Erwin Rail-Trail and the Cape Fear River Park Trail. Winning these grants would allow us to build a 1.5 mile connector between the two existing trails, creating 7.5 miles of continuous trail! We hope to have good news to share in the coming months.

**American Tobacco Trail:** Construction is currently underway to close the gap in the American Tobacco Trail! Approximately 4.2 miles of new trail, including a pedestrian bridge over Interstate-40, will complete the trail from its current end point at NC-54 and Fayetteville Street in Durham to the Chatham County line. Closing this gap will create over 20 miles of continuous trail! The bridge will be placed in mid-March...keep an eye out on I-40 near exit 276!